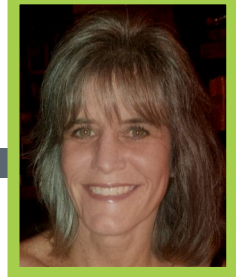




Petrela, Winter & Associates bolsters its London Ontario office, with the Addition of Jackie Kempa



Petrela, Winter & Associates (PWA) is pleased to announce the addition of Jackie Kempa to its team of bonding and construction insurance broker specialists, in the London, Ontario office.

“Bringing on Jackie means we’re doing something right, and southwestern Ontario has embraced our value proposition” says Greg Petrela, the company President. “We continue to build our business by attracting quality contractor clients who appreciate the benefits that a highly specialized brokerage like PWA brings to the table. What that means is that we need to stay ahead of the curve, and invest in good people in our London office - we’re known for pragmatic hands on service, and that can’t happen unless you have good boots on the ground”.

Jackie will be complemented by the full support of PWA’s industry leading team of advisors and resources, providing support to contractors across Canada with personalized service and expert advice that PWA is known for in the construction industry.

“Jackie’s commercial insurance experience combined with her professionalism and can-do attitude will be a great asset to our London office as we continue to add meaningful value to client businesses, and strengthen our position as the go to brokerage firm for contractors in Southwestern Ontario”, says Shawn McCallum, Account Executive and London Branch Manager.

Prior to joining PWA, Jackie spent 5 years as a Commercial Account Manager for a large national insurance brokerage firm. She holds her Registered Insurance Broker of Ontario licence and is working towards her Chartered Insurance Professional (CIP) designation.

Jackie is a resident of London, Ontario and joins PWAs with 20+ years experience in the insurance industry. She was the Past Chairperson of St. Theresa’s School Council as well as canvassed for the March of Dimes and participant in Big Brothers Big Sisters Bowl for Kids Sake.

Petrela, Winter & Associates is a leading Canadian bonding and insurance brokerage specializing exclusively in construction. PWA is backed by the resources and buying power of Navacord, one of the largest and most influential commercial insurance brokers in Canada”

For more information, visit our website at www.petrelawinter.com

We welcome all inquiries



Toronto Office 416.488.2522
Sudbury Office 705.822.7506
London Office 519.964.2833

Jackie Kempa
E jkempa@petrela.com
T 519.964.2833

Shawn McCallum
E smccallum@petrela.com
C 519.860.8525

Greg Petrela
E gpetrela@petrela.com
C 416.892.2635